

Assign Keyboard Shortcuts to Macros via Macro in VBA

<https://docs.microsoft.com/en-us/office/vba/api/excel.application.onkey#example>

Make sure to put this inside "ThisWorkbook" NOT a Module!

```
Sub Workbook_Open()  
  
    With Application  
        .OnKey "{F1}", "Your_Macro_Name"  
        .OnKey "{F2}", "Your_Macro_Name"  
    End With  
  
End Sub  
  
Sub Workbook_BeforeClose(Cancel As Boolean)  
  
    With Application  
        .OnKey "{F1}" 'Clears the setting on close  
        .OnKey "{F2}"  
    End With  
  
End Sub
```

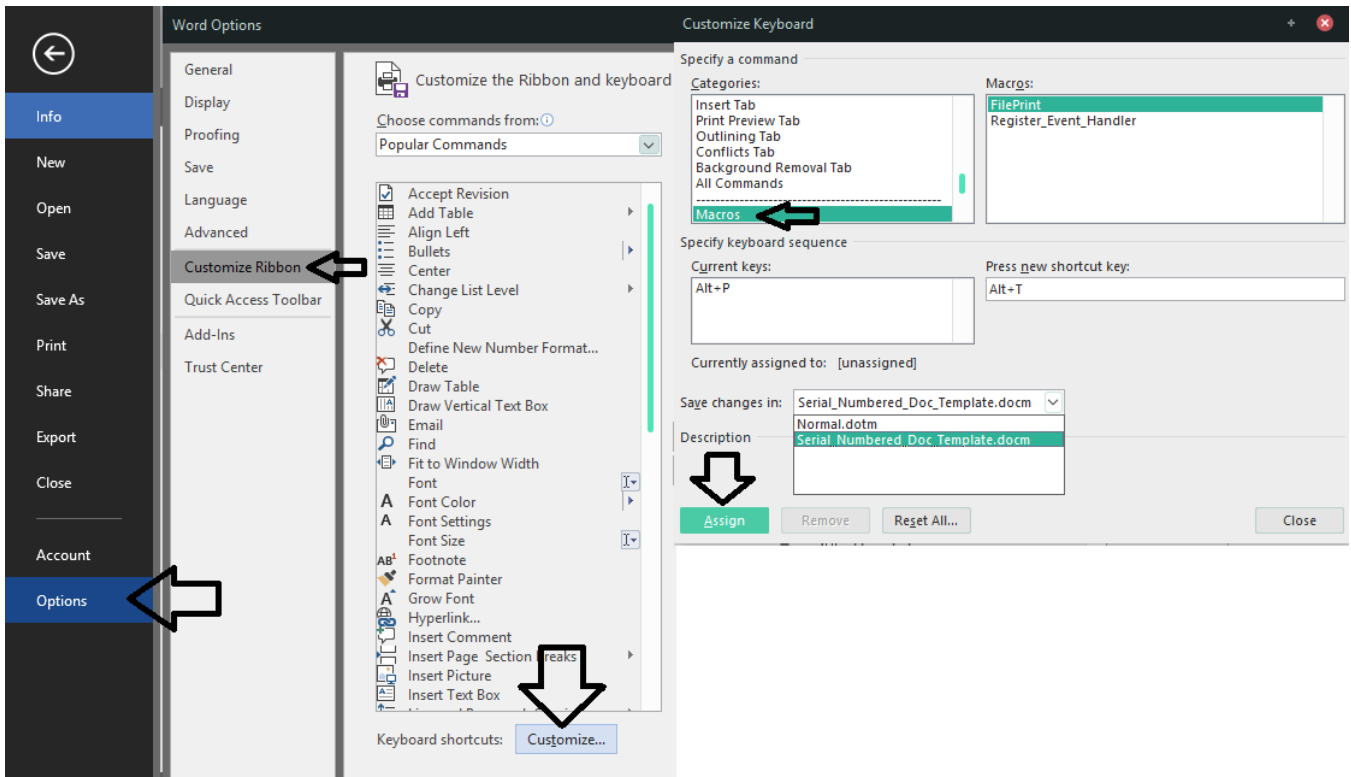
Note: F# do have functions so better to use CTRL+SHIFT+(LETTER) Eg: Use this Module to test CTRL+SHIFT+S

```
Public Sub SetKey()  
Application.OnKey "^+S", "Test"  
End Sub  
  
Public Sub Test()  
MsgBox "Testing"  
End Sub
```

This only works for Microsoft Word (I'd Rec using the above code, but I'm posting for reference)

You must go to File >> Options

- Customize Ribbon >> Keyboard Shortcuts [Customize]
- Under 'Catagories' select "Macro's"
- All it will display all Macro's for normal.dotm, but you can change to "ThisDocument" by selecting "Save Changes In"
- Configure Shortcut and Assign
- Test and Profit



Source:

https://wordribbon.tips.net/T008058_Assigning_a_Macro_to_a_Shortcut_Key.html