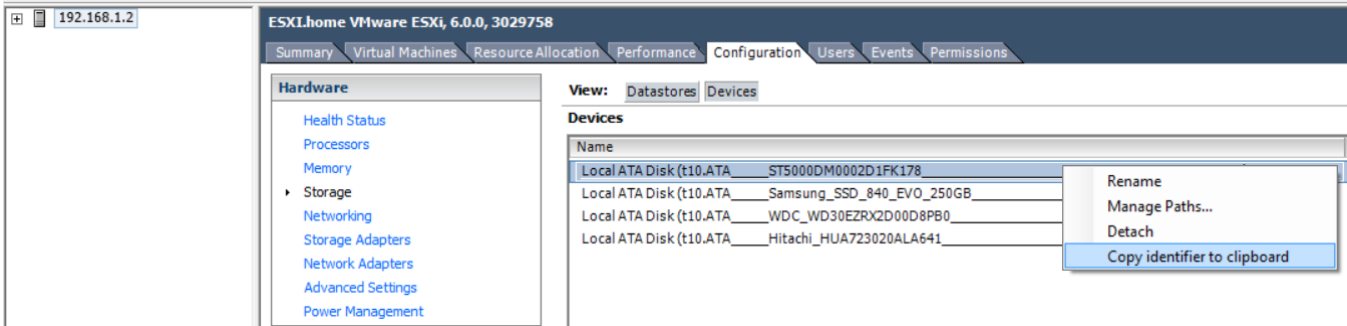


Expose local disk to VMWare ESXI Guest - GPT MBR Greater then 2TB

First you need to [enable SSH on the ESXI host](#) and SSH in.

Then you need to find your disk identifier. There are many complicated CLI ways floating around, but I prefer to use VSphere Client!

Open VSphere and click your host >> configuration >> storage >> devices >> copy identifier to clipboard.



Now in the CLI on the ESXI Host you would use something like this.

(First make directory for local disks)

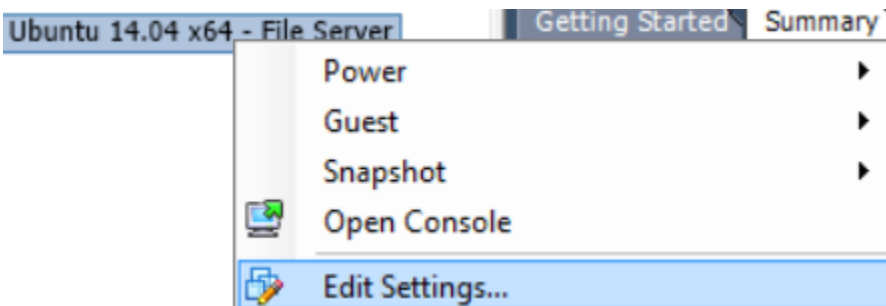
```
mkdir /vmfs/volumes/datastore1/LocalDisks
```

Then:

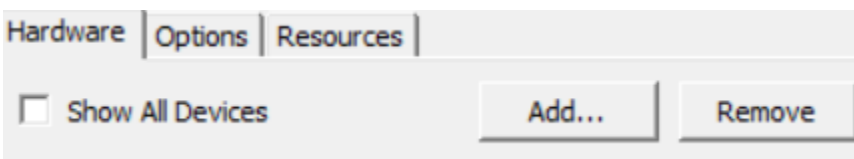
```
vmkfstools -z /vmfs/devices/disks/t10.ATA____ST5000D***** /vmfs/volumes/datastore1/LocalDisks/localdisk1.vmdk
```

That's it for the CLI. Now you have to add this local disk to a VM Guest!

Right click guest and edit settings >>



Select Add under Hardware Tab >>

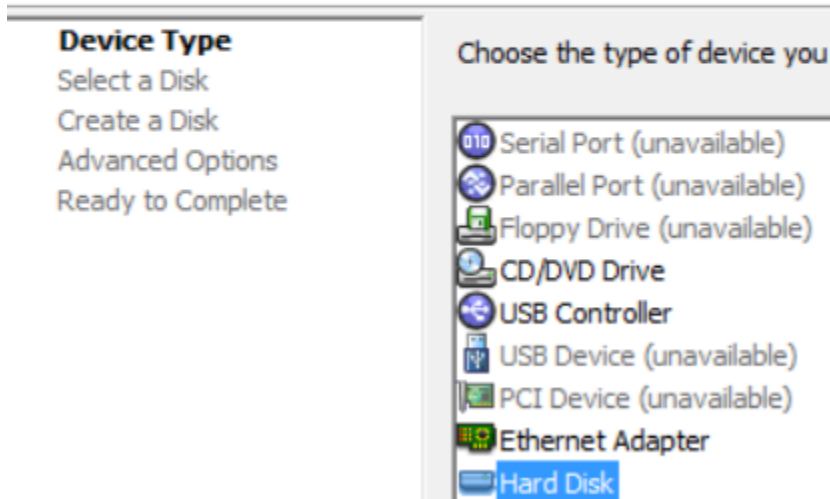


Select Hard Disk >>

Add Hardware

Device Type

What sort of device do you wish to add to your virtual machi



Device Type
Select a Disk
Create a Disk
Advanced Options
Ready to Complete

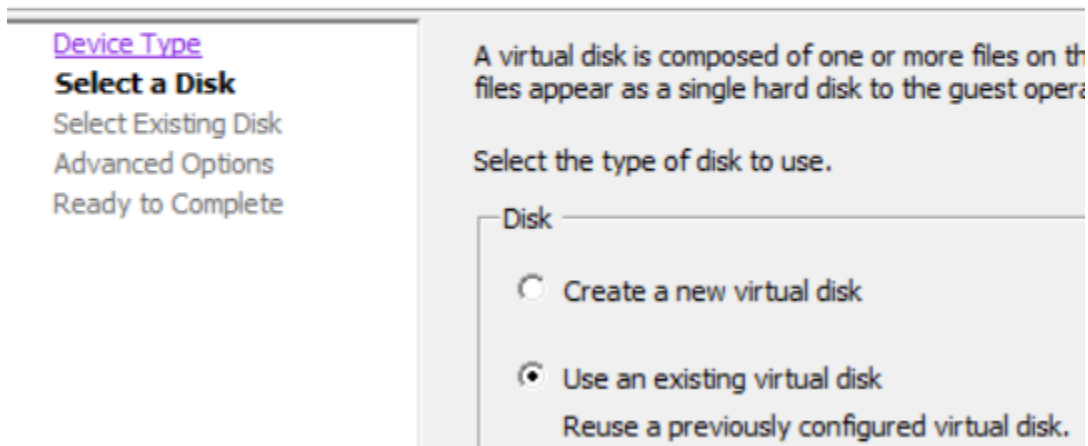
Choose the type of device you

- Serial Port (unavailable)
- Parallel Port (unavailable)
- Floppy Drive (unavailable)
- CD/DVD Drive
- USB Controller
- USB Device (unavailable)
- PCI Device (unavailable)
- Ethernet Adapter
- Hard Disk

Use Existing >>

Add Hardware

Select a Disk



Device Type
Select a Disk
Select Existing Disk
Advanced Options
Ready to Complete

A virtual disk is composed of one or more files on the host. These files appear as a single hard disk to the guest operating system.

Select the type of disk to use.

Disk

- Create a new virtual disk
- Use an existing virtual disk
Reuse a previously configured virtual disk.

I choose Independent mode >>

Add Hardware

Advanced Options

These advanced options do not usually need to be changed.

[Device Type](#)
[Select a Disk](#)
[Select Existing Disk](#)
Advanced Options
Ready to Complete

Specify the advanced options for this virtual disk. These options do not normally need to be changed.

Virtual Device Node

SCSI (0:1)

Mode

Independent
Independent disks are not affected by snapshots.

Persistent
Changes are immediately and permanently written to the disk.

Next >> Complete!

Now in your guest you should be able to see the disks. (In linux try `sudo blkid`, in windows, start >> `diskmgmt.msc`)