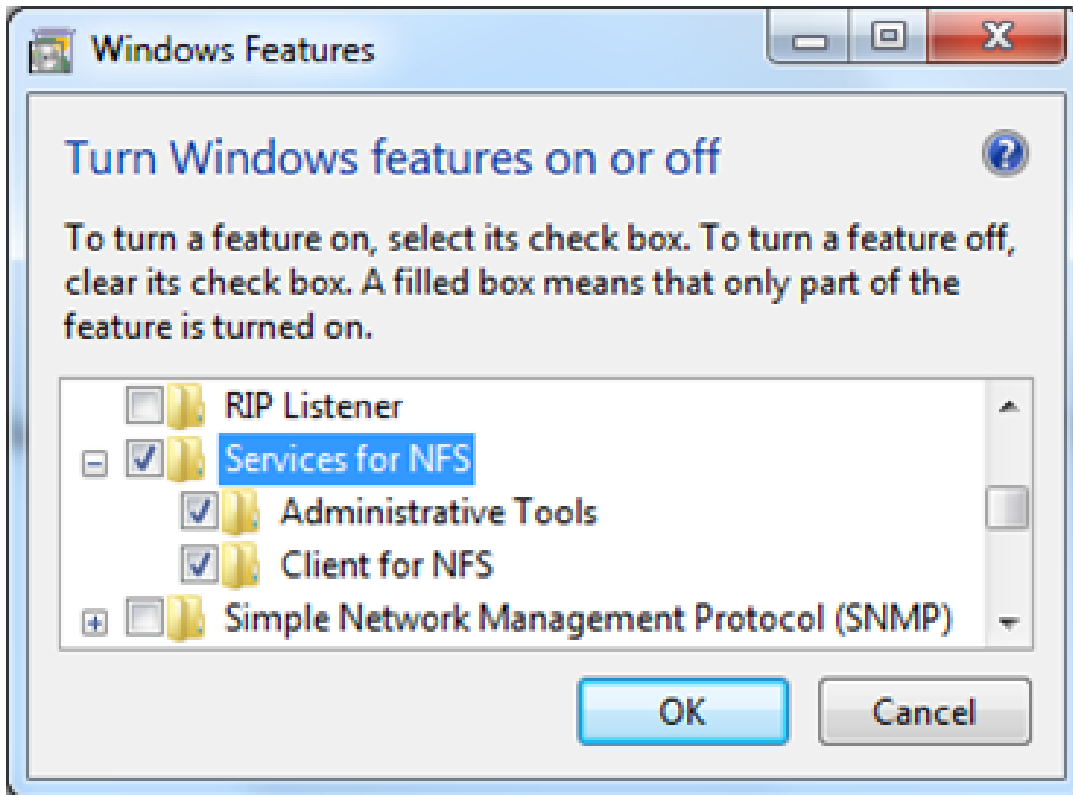


NFS-Client - Windows Mounting of NFS exports

To start, I should mention currently only Windows 7 Ultimate, Windows 8.1 Enterprise and Windows 10 Enterprise & Education offer NFS-Client.

To "install" or activate the NFS-Client simply press start and go to "Add or Remove Programs">>"Turn Windows Features on or Off"

Make sure to expand Services for NFS and tick both sub-directories.



To Mount NFS Share use something like this:

```
mount 192.168.42.42: /! R: && mount 192.168.42.42: /home/user/ F:
```

To Unmount NFS use something like this:

```
umount R: -F && umount F: -F
```

If you use this guide, you should definitely read this guide on [Silent CMDs](#) to automate and hide this process. I have MountNFS-Silent in my startup and UnmountNFS-Silent pinned to start-menu. Having Mount-NFS in startup will fail if outside LAN, but no harm really, doesn't affect boot time.

NFS-Client for Windows does not automatically follow Remote Symlinks, please read [here](#) to enable.